



Marine Debris in the Gulf of Mexico

Peter Murphy

NOAA Marine Debris Program / Genwest

Biloxi, Mississippi
October 25, 2009



Outline

- 1. Project Background**
- 2. Process**
- 3. 2006-2007 – Alabama, Mississippi**
- 4. 2007-2009 - Louisiana**
- 5. Outputs**

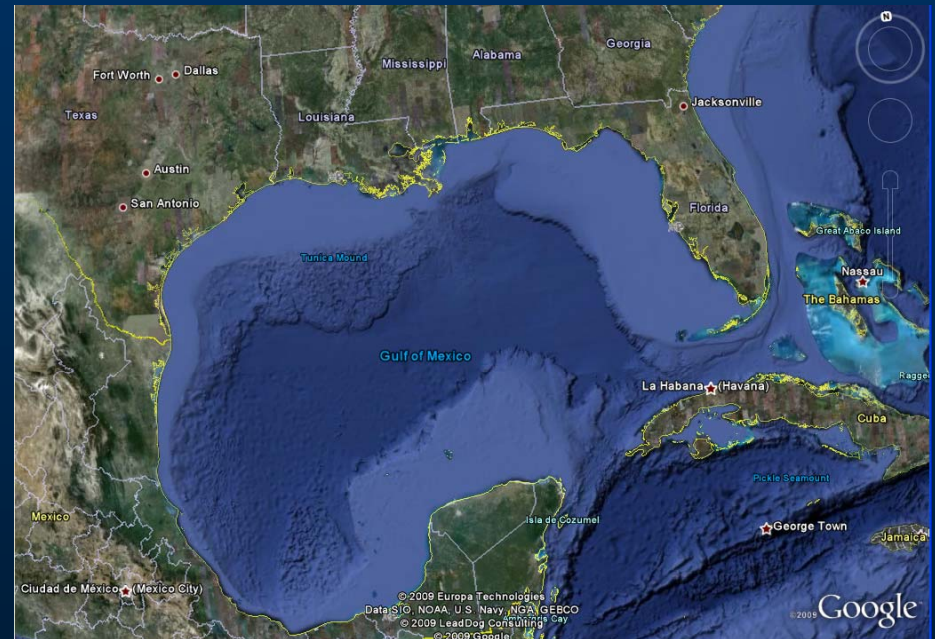


Marine Debris

OFFICE OF RESPONSE AND RESTORATION • NOAA'S NATIONAL OCEAN SERVICE

Gulf of Mexico

- 9th largest body of water in the world
- ½ of US wetlands
- \$2.2 T share of GDP, 20 million jobs (2006)
- 50% of US oil, gas & refinery production
- 7 of top 10 US ports located in GOM
- 25 M marine recreational fishing trips by 3.6 M residents
- GOM yields 69% of US Shrimp, 70% of US Oysters





Congressional Response

- Congressional Appropriation
 - 2006-2007 funding to address debris impacts
 - Conduct surveys
 - Process survey data into effective and useable information,
 - Conduct risk assessment
 - Implement outreach plan
 - NOAA Marine Debris Program and Office of Coast Survey selected to lead data collection and analysis





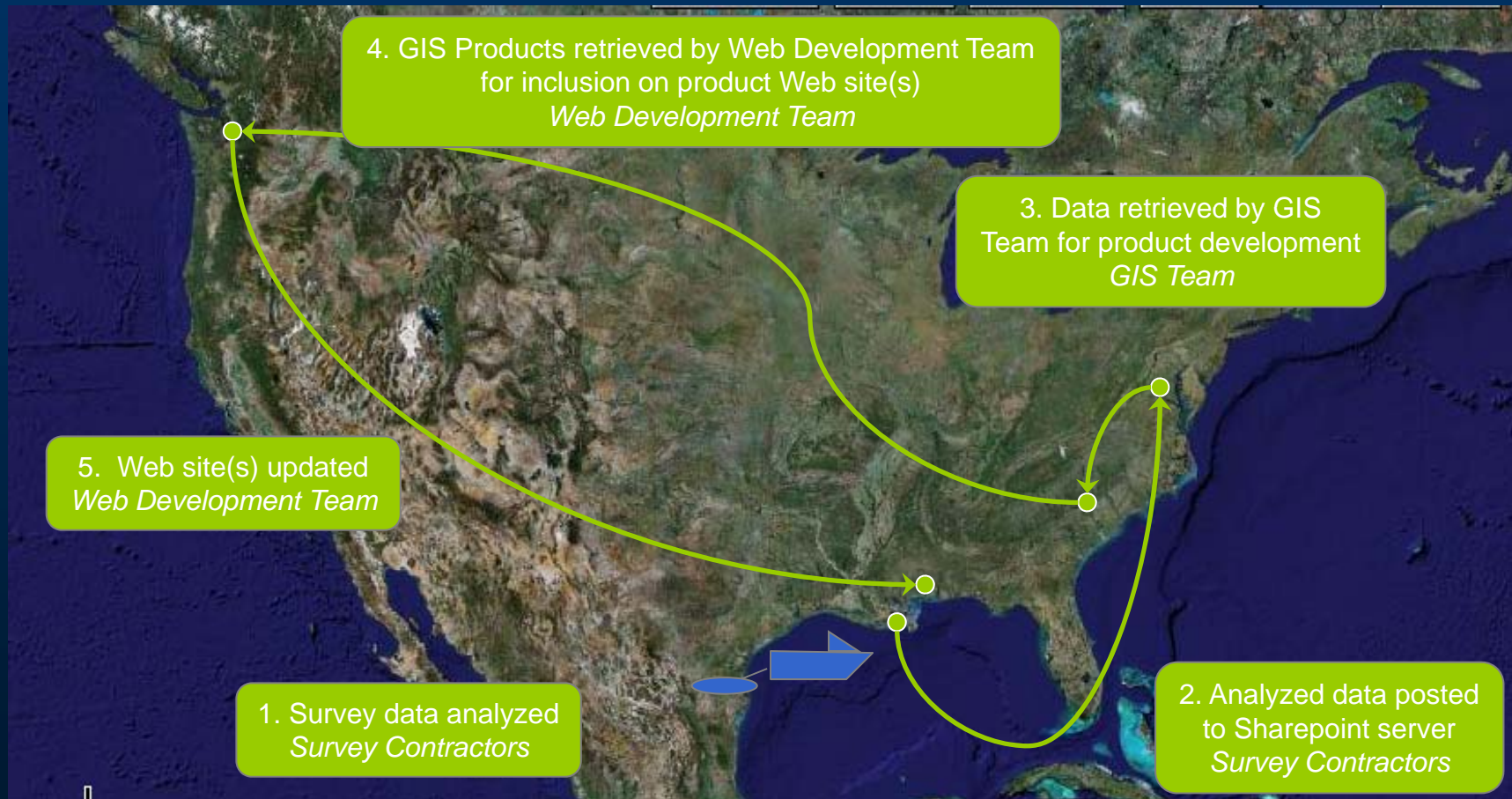
NOAA Gulf of Mexico Marine Debris Project (GOMMDP)

- Project Goals
 - Support restoration of fishing industry and grounds in GOM
 - Support efficient and cost-effective debris removal
 - Conduct public outreach to stakeholders
 - Fishers
 - Boaters (comm. & rec.)
 - Resource managers



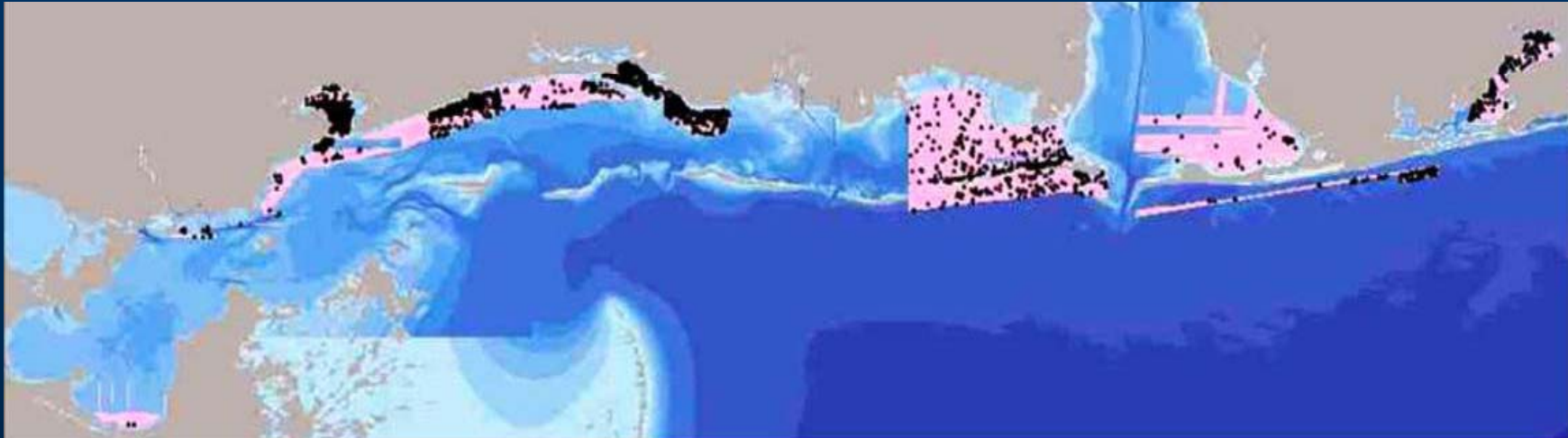


Data Process





Appropriation in Action – SUPP1



- 2006-2007
 - Alabama, Mississippi, Louisiana
 - NOAA, FEMA, USCG, State Agencies
 - Survey by NOAA based on State input, removal by USCG/state contractors paid by FEMA funding
 - Results
 - Outreach in partnership with SeaGrant (AL, MS, LA Offices)
 - 5,000+ targets identified
 - 700+ mi² surveyed



Project Website – SUPP1

- SUPP1 Web site
 - Survey maps and data, updated every 2-3 weeks
 - Link to interactive Internet Mapping Server (Arc IMS)
 - FEMA debris removal maps and tables, updated weekly
 - Links to internal /external project partners
 - Outreach products, media information, related publications, photos, and videos

The screenshot shows the homepage of the Marine Debris Program website. At the top, it features the NOAA logo and the text 'MARINE DEBRIS PROGRAM' and 'Gulf of Mexico MARINE DEBRIS PROJECT'. Below the header, there is a navigation menu with links for 'Home', 'Maps & Data', 'Alabama', 'Louisiana', 'Mississippi', 'Introduction Basics', 'Data Analysis', 'Project Description', 'Outreach', 'Photos & Videos', 'Recent Notifications', 'Links', 'Contacts', and 'Media'. The main content area includes a welcome message, a survey area map of the Gulf of Mexico coast, and a list of individual state maps for Alabama, Louisiana, and Mississippi. There are also sections for 'What's New' with recent updates and 'Upcoming Events' with a calendar for April 2007. A large banner at the bottom right reads 'SUPP1 Public Web site Home'.



Appropriation in Action – SUPP2



- 2007-2008
 - Louisiana
 - Inshore
 - Inland waterways – lakes, rivers, bayous
 - Submitted by parish
 - Offshore
 - Offshore transect surveys (as SUPP1)
 - Near-shore environment to state boundary line (c. 3 miles)
 - Increase in number of participating agencies
 - Even greater need for communication and coordination



Marine Debris

OFFICE OF RESPONSE AND RESTORATION • NOAA'S NATIONAL OCEAN SERVICE

Project Website – SUPP2: <http://gulfofmexico.marinedebris.noaa.gov/>

Gulf of Mexico Marine Debris

NATIONAL OCEANIC AND ATMOSPHERIC ADMINISTRATION
MARINE DEBRIS PROGRAM

USCG FEMA LA DNR LA GOHSEP NOAA MDP NOAA OCS

Site Search

NAVIGATION
 Maps & Data
 > [Project Map](#)
 > [Interactive Mapper](#)
 > Data Analysis
[Project Description](#)
[Outreach](#)
[Photos & Video](#)
[Links](#)
[Contacts](#)
[Help](#)

[What's New](#)

[Project Home - 2007](#)

HOME PAGE
 by admin — last modified 2008-06-10 17:52
 Please click on the area name to view map and status information for the desired area.

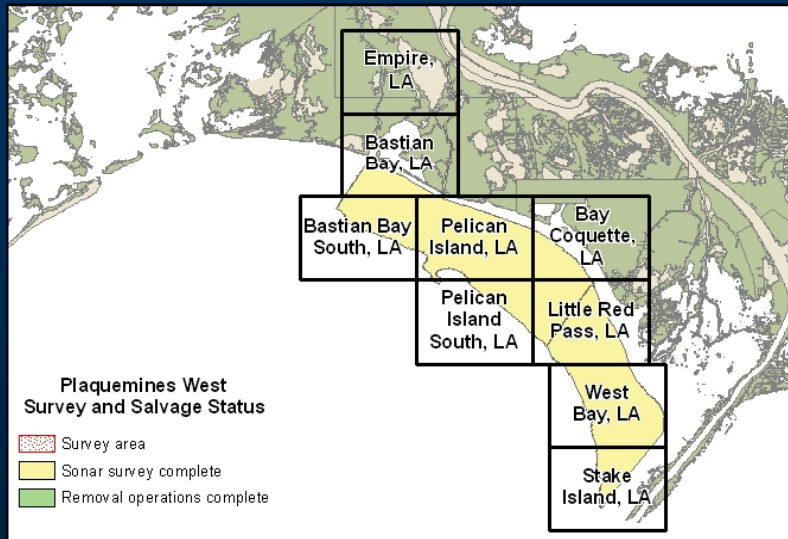
Survey Status

Map labels include: West Feliciana, East Feliciana, St. Helena, Tangipahoa, Washington, St. Tammany, St. Landry, Pointe Coupee, East Baton Rouge, Livingston, Iberville, Ascension, St. John the Baptist, Orleans, St. Bernard, St. Charles, St. James, St. Mary, Assumption, Lafourche, Terrebonne, Iberia, Vermilion, Cameron, Jefferson Davis, Acadia, Lafayette, St. Martin, West Louisiana, Barataria Bay Approach, Plaquemines East, Plaquemines West, Plaquemines.

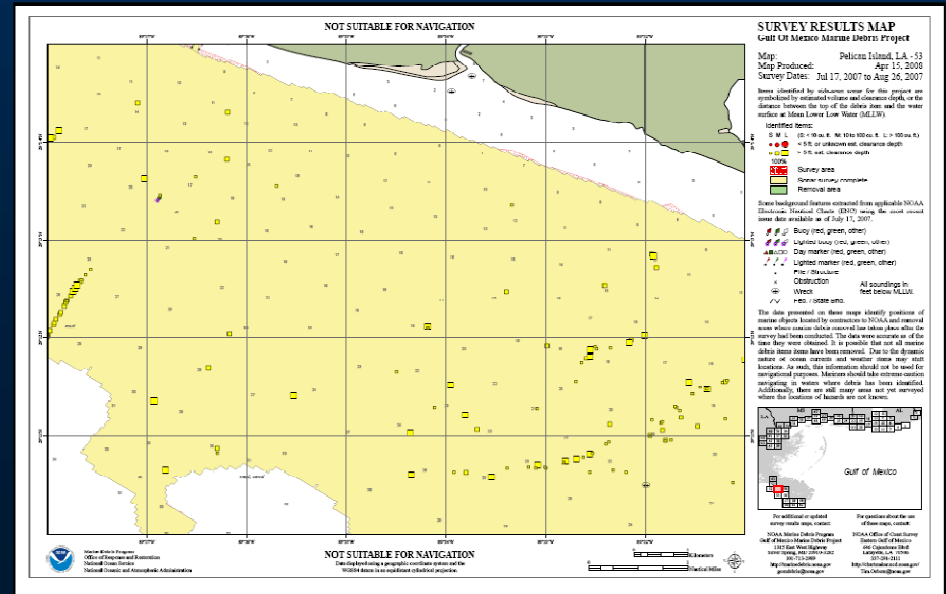


OFFICE OF RESPONSE AND RESTORATION • NOAA'S NATIONAL OCEAN SERVICE

Project Website Features Survey Mapping



Work Area - Tiles



Map Tile – Target Detail



OFFICE OF RESPONSE AND RESTORATION • NOAA'S NATIONAL OCEAN SERVICE

Project Website Features

Interactive GIS Mapper + Target Information



NATIONAL OCEANIC AND ATMOSPHERIC ADMINISTRATION
MARINE DEBRIS PROGRAM
Gulf of Mexico MARINE DEBRIS PROJECT

NAVIGATION
Zoom In Zoom Out Previous
Full Extent Plan

OTHER TOOLS
Identify Map Tips

OUTPUT
Print Map Download

INSTRUCTIONS
Browser must have javascript enabled and popup blocks disabled.
At the initial extent of this map, the individual locations for debris are not visible.
Using the **Zoom In** tool, select a smaller extent by boxing an area on the map with your cursor. The debris locations should appear on the map.
Using the **Identify** tool, additional information about active dataset can be accessed by using your cursor to select a feature.

Interactive Mapper

NATIONAL OCEANIC AND ATMOSPHERIC ADMINISTRATION
MARINE DEBRIS PROGRAM
Gulf of Mexico MARINE DEBRIS PROJECT

NAVIGATION
Zoom In Zoom Out Previous
Full Extent Plan

OTHER TOOLS
Identify Map Tips

OUTPUT
Print Map Download

Debris Locations

Field	Value
Record #	1
Item ID	260-135945-P
Survey Date	17 Sep 2007
Latitude	29.029384
Longitude	-89.393454
Image	260-135945-P.jpg
Height (ft)	5.9
Length (ft)	60.4
Width (ft)	1
Charted Depth (ft)	11
E.t. Least Depth	0

Not Suitable For Navigation

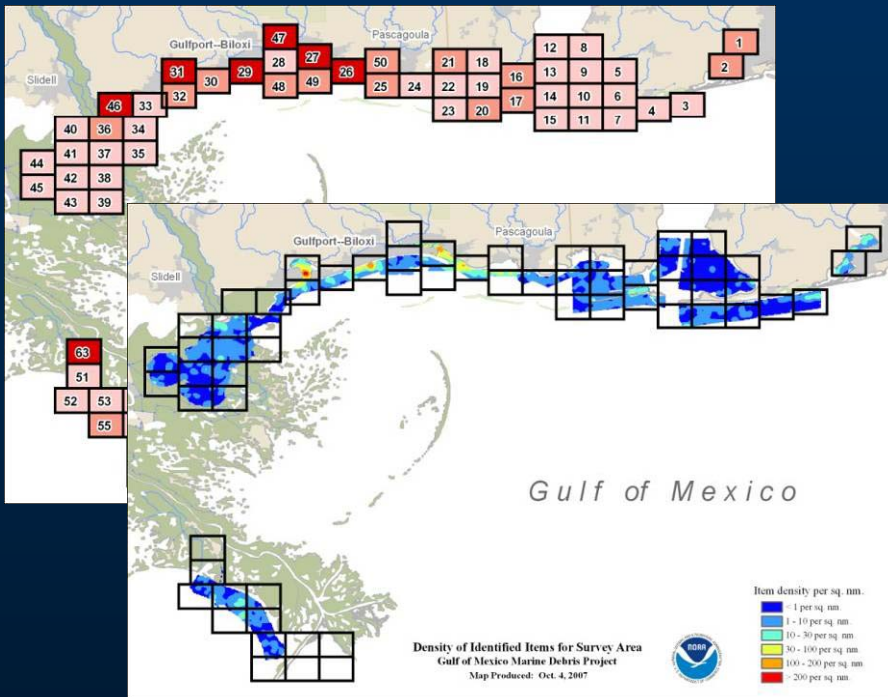
IMS - Zoomed

Field	Value
Record #	1
Item ID	260-135945-P
Survey Date	17 Sep 2007
Latitude	29.029384
Longitude	-89.393454
Image	260-135945-P.jpg
Height (ft)	5.9
Length (ft)	60.4
Width (ft)	1



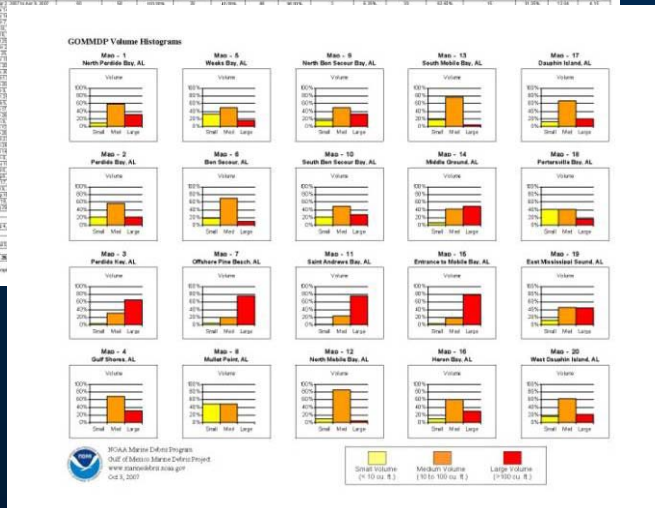
OFFICE OF RESPONSE AND RESTORATION • NOAA's NATIONAL OCEAN SERVICE

Project Website Features Data Analysis



Full Database of Debris Records
Web Version: 2/20/2008 8:00:07 AM
Published on: 10/6/2007

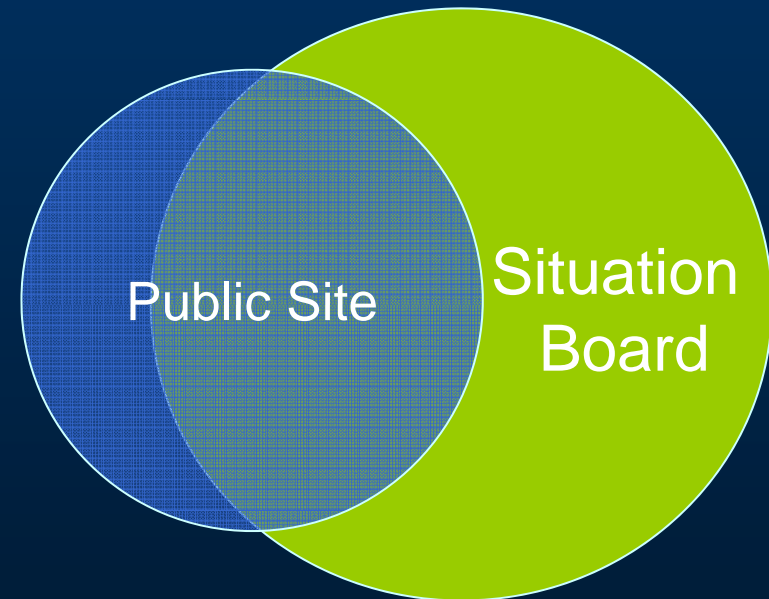
Item Number	Map Sheet	Map Section	Number of Items	Item Type	Item Length	Item Width	Item Weight	Item Volume	Item Density	Item Count	Item Weight	Item Volume	Item Count	Item Weight	Item Volume
1	Slide I	1	1
2	Slide I	2	2
3	Slide I	3	3
4	Slide I	4	4
5	Slide I	5	5
6	Slide I	6	6
7	Slide I	7	7
8	Slide I	8	8
9	Slide I	9	9
10	Slide I	10	10
11	Slide I	11	11
12	Slide I	12	12
13	Slide I	13	13
14	Slide I	14	14
15	Slide I	15	15
16	Slide I	16	16
17	Slide I	17	17
18	Slide I	18	18
19	Slide I	19	19
20	Slide I	20	20
21	Slide I	21	21
22	Slide I	22	22
23	Slide I	23	23
24	Slide I	24	24
25	Slide I	25	25
26	Slide I	26	26
27	Slide I	27	27
28	Slide I	28	28
29	Slide I	29	29
30	Slide I	30	30
31	Slide I	31	31
32	Slide I	32	32
33	Slide I	33	33
34	Slide I	34	34
35	Slide I	35	35
36	Slide I	36	36
37	Slide I	37	37
38	Slide I	38	38
39	Slide I	39	39
40	Slide I	40	40
41	Slide I	41	41
42	Slide I	42	42
43	Slide I	43	43
44	Slide I	44	44
45	Slide I	45	45
46	Slide I	46	46
47	Slide I	47	47
48	Slide I	48	48
49	Slide I	49	49
50	Slide I	50	50
51	Slide I	51	51
52	Slide I	52	52
53	Slide I	53	53
54	Slide I	54	54
55	Slide I	55	55
56	Slide I	56	56
57	Slide I	57	57
58	Slide I	58	58
59	Slide I	59	59
60	Slide I	60	60
61	Slide I	61	61
62	Slide I	62	62
63	Slide I	63	63
64	Slide I	64	64
65	Slide I	65	65
66	Slide I	66	66
67	Slide I	67	67
68	Slide I	68	68





Web Presence – SUPP2

- SUPP 2
 - Increased need for multi-agency cooperation
 - Need for data sharing
 - Data security concerns across agencies
 - Need for secure web interface for project status display and updates.



→ **The Situation Board**



OFFICE OF RESPONSE AND RESTORATION • NOAA's NATIONAL OCEAN SERVICE

Situation Board

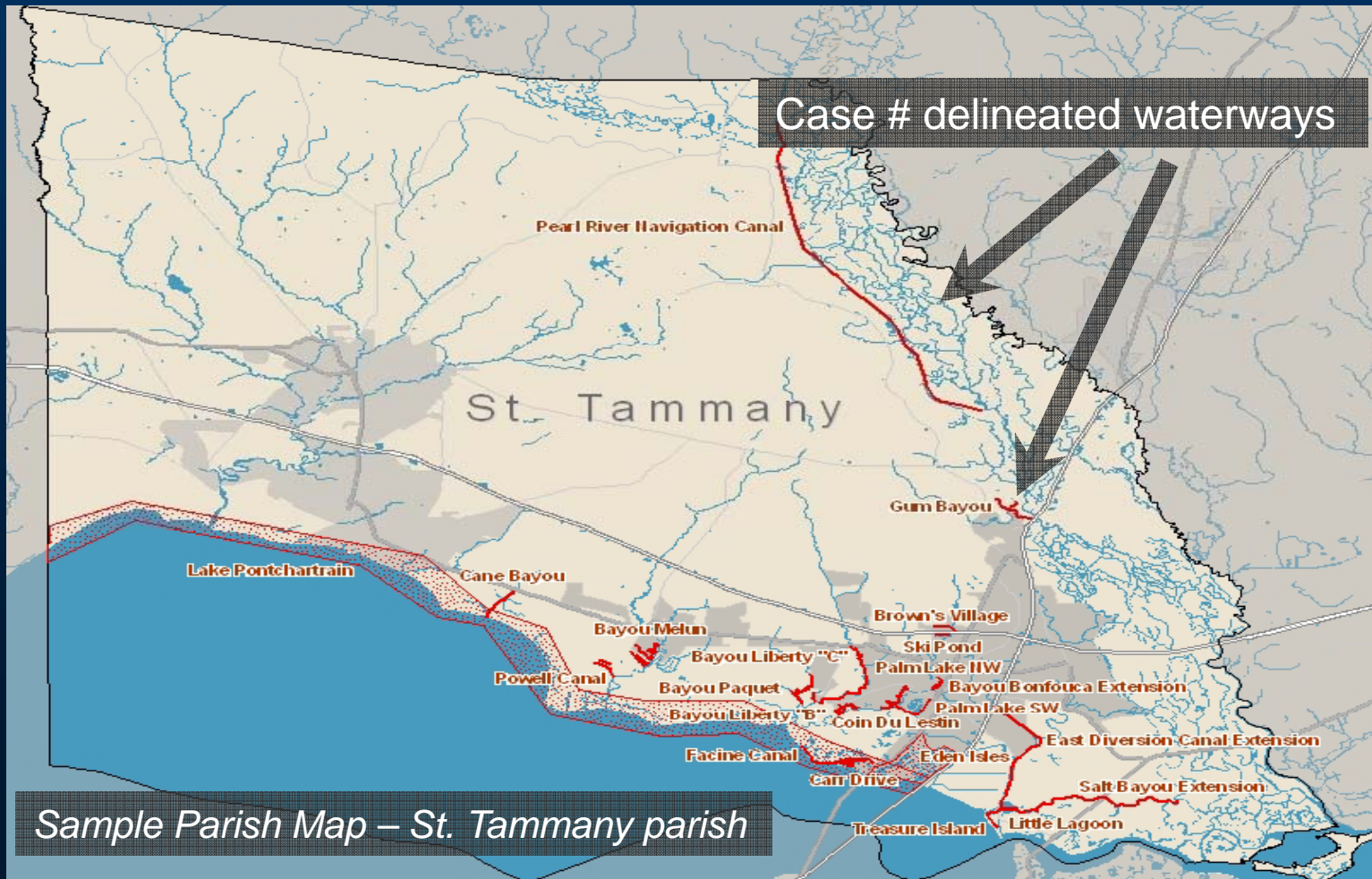
- Operational Focus
 - Designed for intuitive use by operation personnel (field and management)
- Increased data display
 - Operational documents
 - Internal USCG ICS Docs
 - Photos
 - EU Reviews
- Rapid data updates
 - Content updated as it becomes available
- Secure
 - Password protected
 - USCG + NOAA controlled user list

Situation Board Home View

The USCG, NOAA and FEMA, working as a federal, economic and safety impacts of marine debris coordinated effort between multiple federal and



Situation Board Features Parish Map with Impacted Waterways





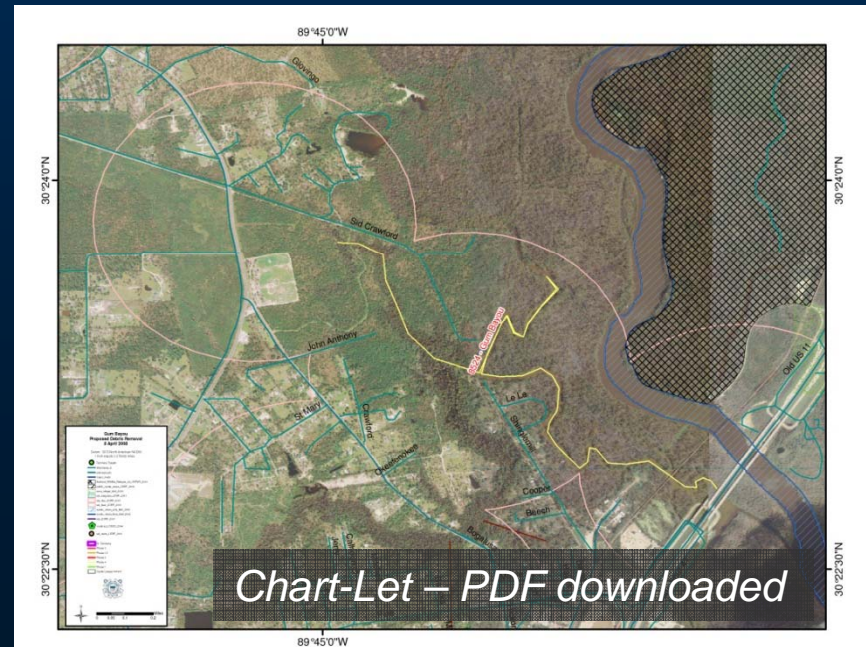
OFFICE OF RESPONSE AND RESTORATION • NOAA'S NATIONAL OCEAN SERVICE

Situation Board Features

Waterway Chart-let



Waterway Chart-Let - Website View



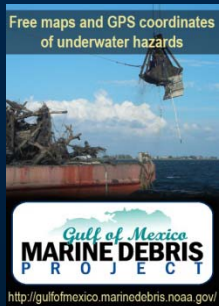


Marine Debris

OFFICE OF RESPONSE AND RESTORATION • NOAA'S NATIONAL OCEAN SERVICE

Outreach – SUPP2

- Louisiana Focus
 - Target Audiences
 - Topography
 - Debris Impacts
 - **Different Products**
- Vietnamese Fisher Concentrations
 - Translation of materials




Web Icon



Magnet

Lurking beneath calm waters...




Hurricanes Katrina and Rita deposited huge amounts of marine debris along the Gulf of Mexico coast. This sunken debris can damage boats and fishing gear.

Efforts to survey, map, and remove debris continue across Louisiana's coast.

Get free maps and GPS coordinates of underwater hazards at <http://gulfofmexico.marinedebris.noaa.gov/>

Brochures without Internet access may call Louisiana Sea Grant at (225) 378-6412 to receive free map products by mail.



Project Poster



Ruler



Knowledge Gained



- NOAA Marine Debris Program gained valuable additional experience:
 - Disaster response
 - Information distribution
 - Web presence development
 - Technology integration
 - Interagency partnership

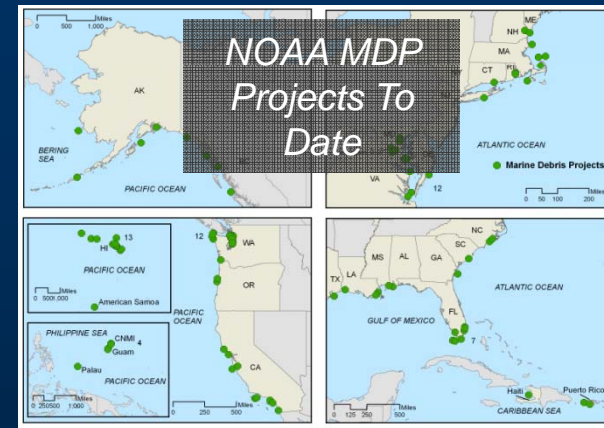


Marine Debris

OFFICE OF RESPONSE AND RESTORATION • NOAA'S NATIONAL OCEAN SERVICE

Knowledge Applied

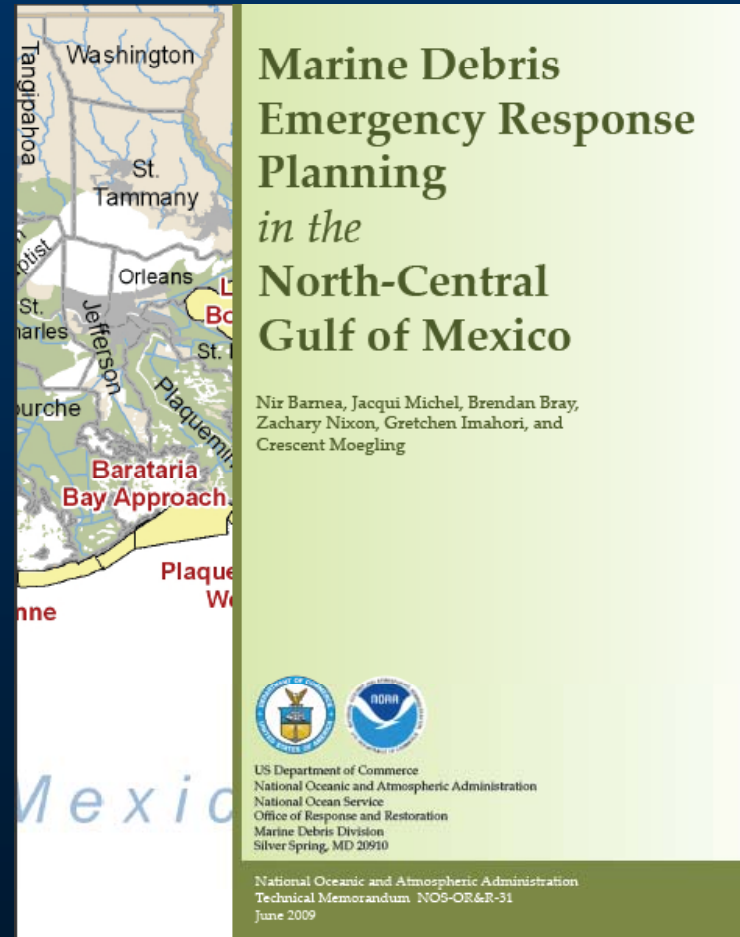
- Emergency Response
 - Emergency Response Plan (ERP)
 - MDIC Action Plan
- Information Display & Distribution
 - Marine Debris Clearinghouse
- Technology Integration
 - PDA/GPS, Google Maps/Google Earth
- Interagency partnership
 - Continual process





Knowledge Applied, Cont.

- **Emergency Response Plan**
 - Suggested by Gulf States
 - Capture experiences and lessons learned
 - Provide planning guidelines and recommendations
 - Input From
 - Alabama, Mississippi, Louisiana
 - USCG
 - FEMA
 - NOAA
 - Sea Grant
 - OCS Survey Teams





Thank You

Any Questions?

Peter Murphy
NOAA Marine Debris Program
peter.murphy@noaa.gov
w.206.526.4661
m.206.291.0073